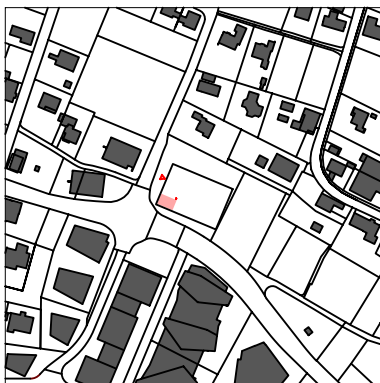


## TOP 4.01



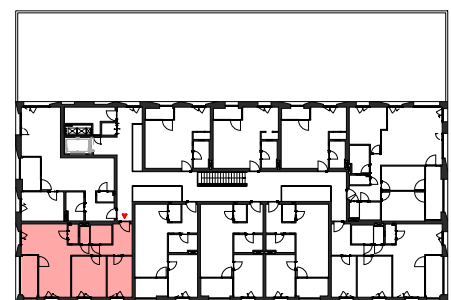
### 4. OG

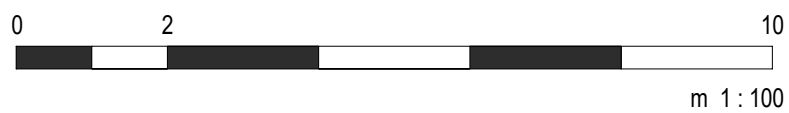
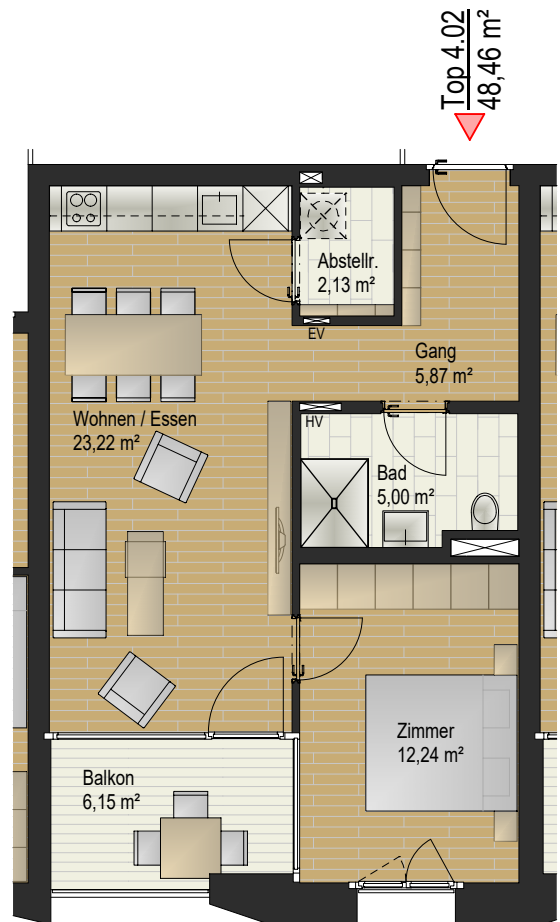
3 Zimmer

Ausrichtung: Süd-West

Wohnraum: 69,45 m<sup>2</sup>

Balkon: 7,24 m<sup>2</sup>





## TOP 4.02



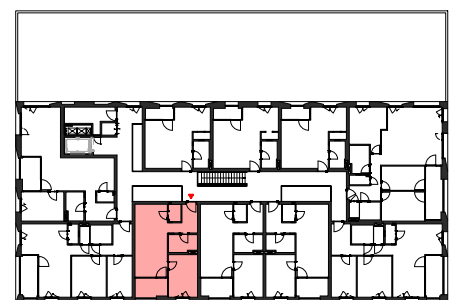
### 4. OG

2 Zimmer

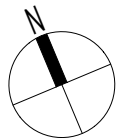
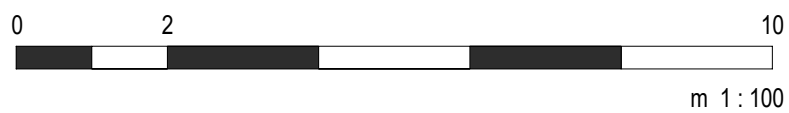
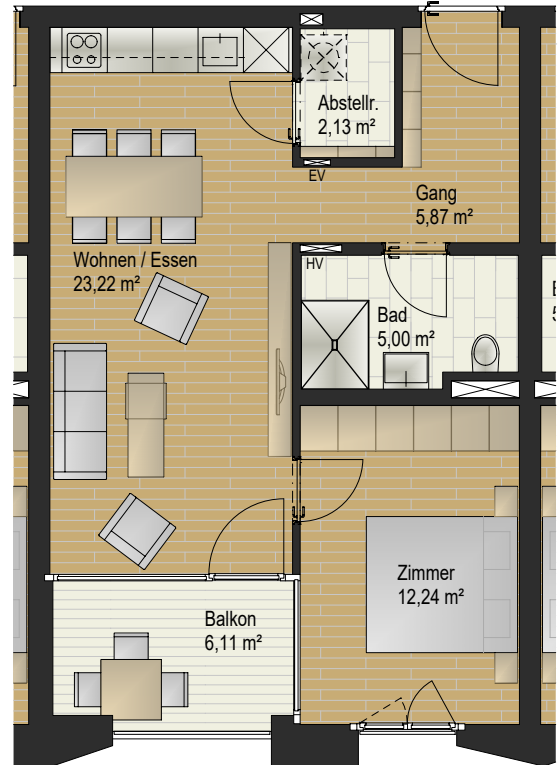
Ausrichtung: Süd-West

Wohnraum: 48,46 m<sup>2</sup>

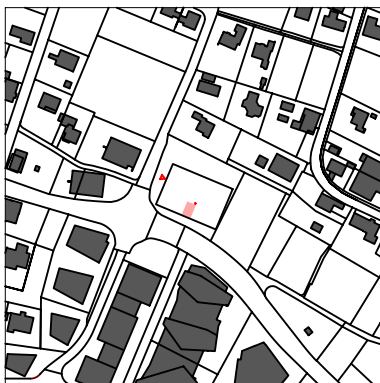
Balkon: 6,15 m<sup>2</sup>



Top 4.03  
48,46 m<sup>2</sup>



## TOP 4.03



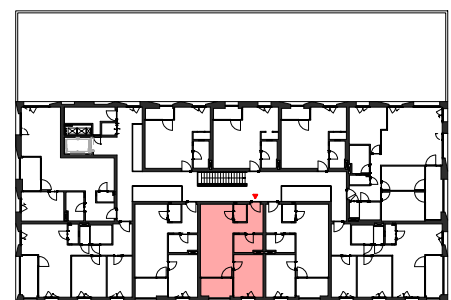
### 4. OG

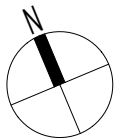
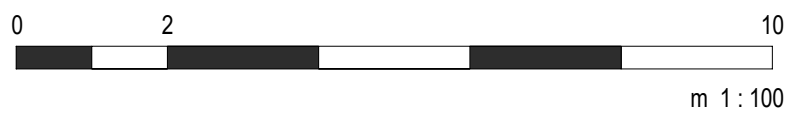
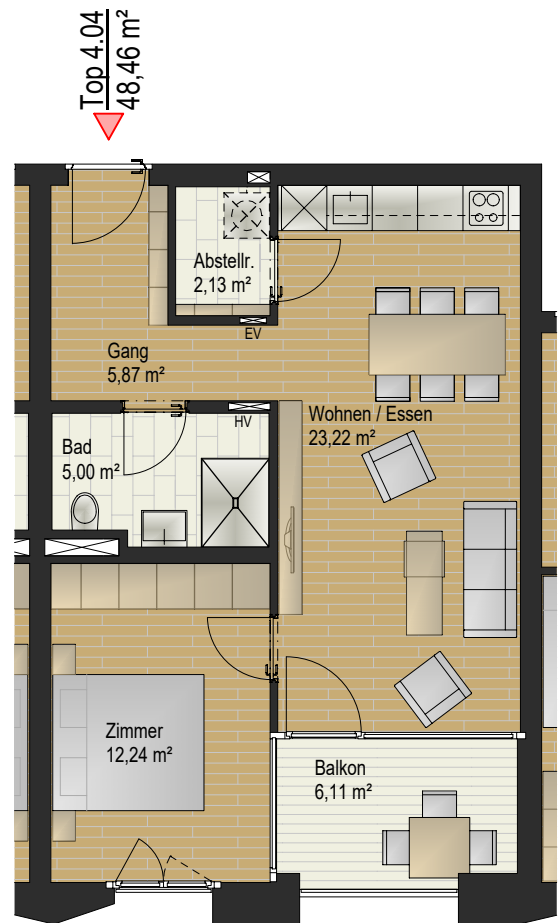
2 Zimmer

Ausrichtung: Süd-West

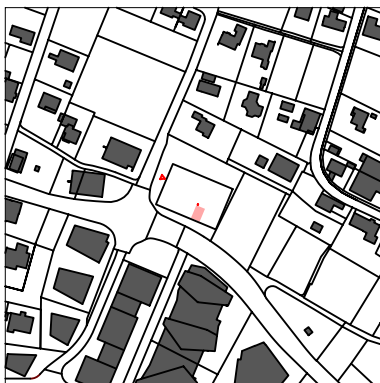
Wohnraum: 48,46 m<sup>2</sup>

Balkon: 6,11 m<sup>2</sup>





## TOP 4.04



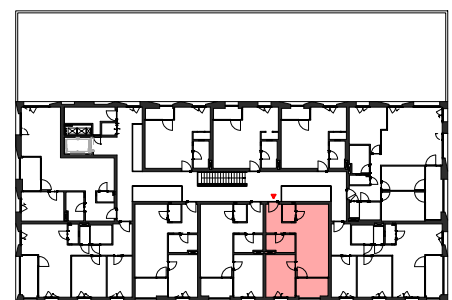
### 4. OG

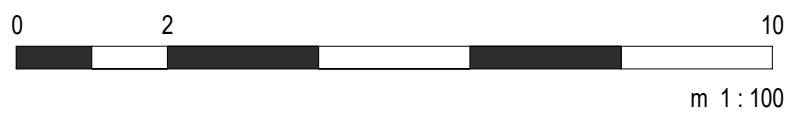
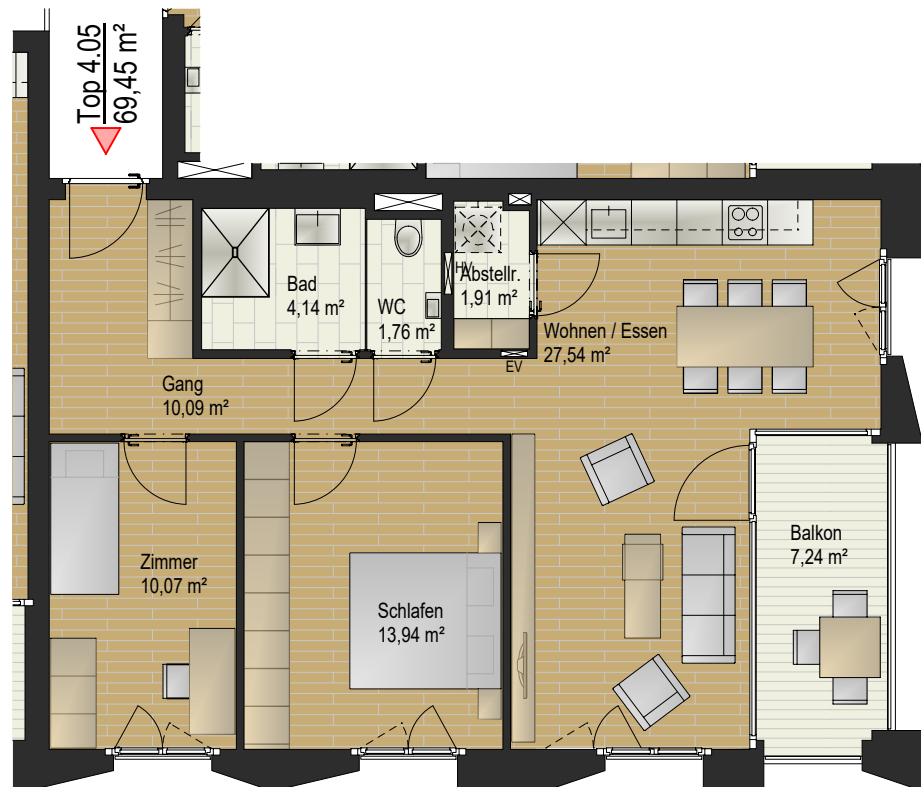
2 Zimmer

Ausrichtung: Süd-West

Wohnraum: 48,46 m<sup>2</sup>

Balkon: 6,11 m<sup>2</sup>





## TOP 4.05



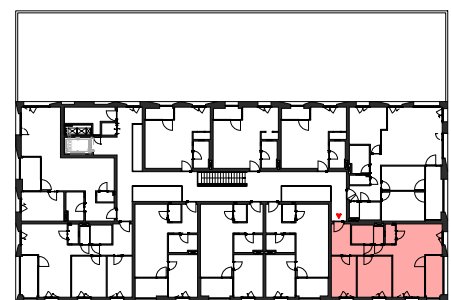
### 4. OG

3 Zimmer

Ausrichtung: Süd-West

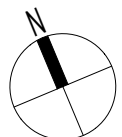
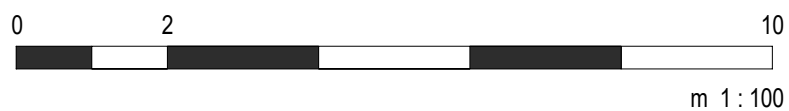
Wohnraum: 69,45 m<sup>2</sup>

Balkon: 7,24 m<sup>2</sup>





Top 4.06  
90,21 m<sup>2</sup>



## TOP 4.06



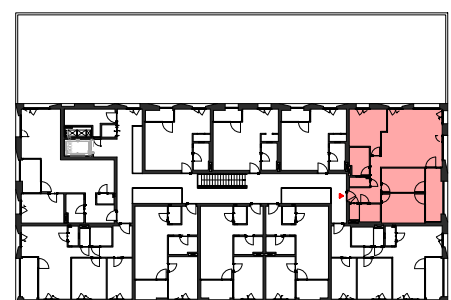
### 4. OG

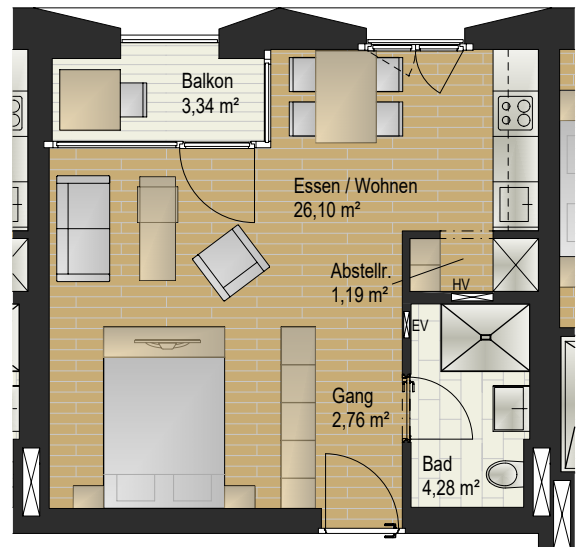
4 Zimmer

Ausrichtung: Süd-Ost

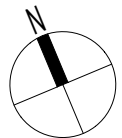
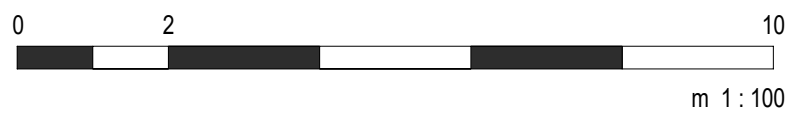
Wohnraum: 90,21 m<sup>2</sup>

Balkon: 8,86 m<sup>2</sup>

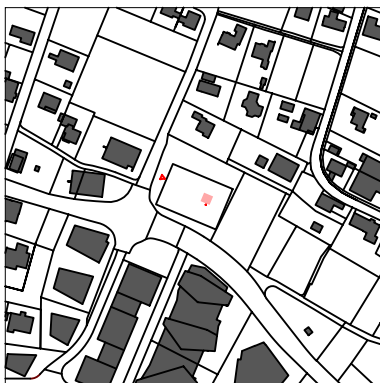




Top 4.07  
34,33 m<sup>2</sup>



## TOP 4.07



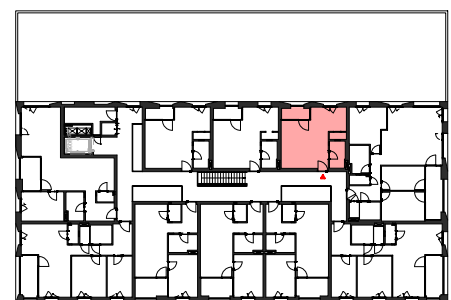
### 4. OG

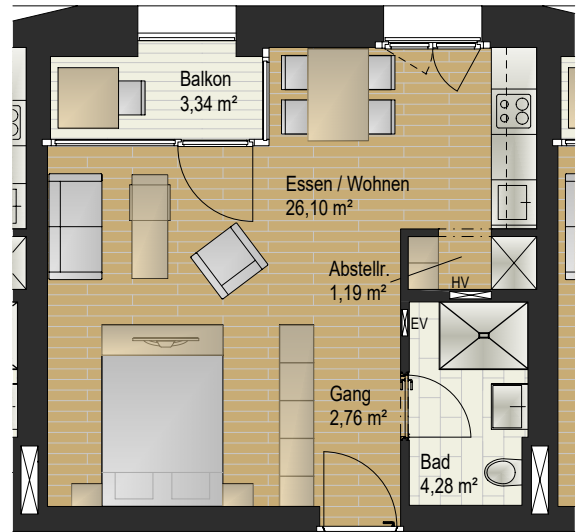
1 Zimmer

Ausrichtung: Nord-Ost

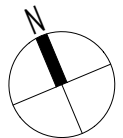
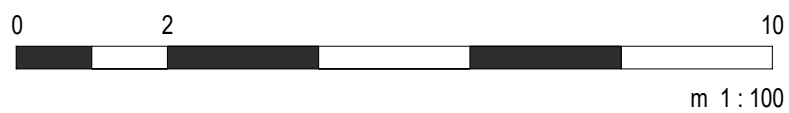
Wohnraum: 34,33 m<sup>2</sup>

Balkon: 3,34 m<sup>2</sup>

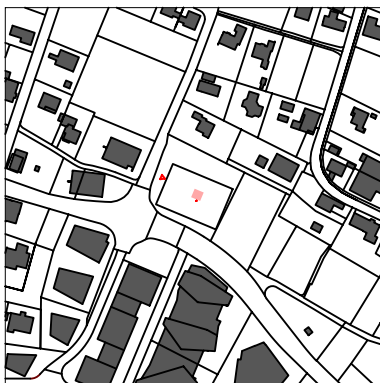




Top 4.08  
34,33 m<sup>2</sup>



## TOP 4.08



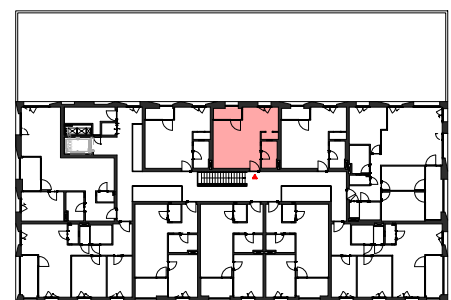
### 4. OG

1 Zimmer

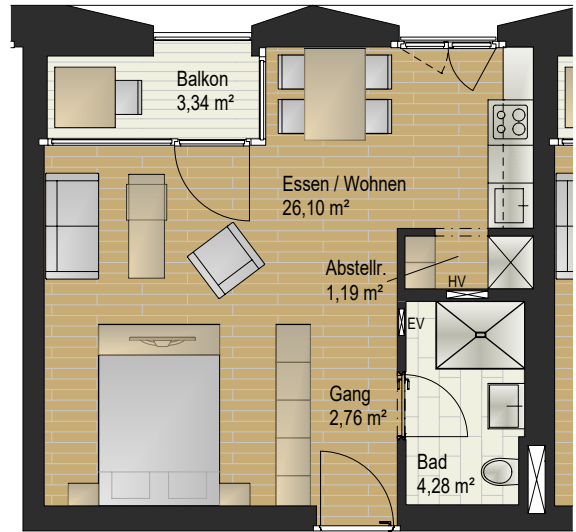
Ausrichtung: Nord-Ost

Wohnraum: 34,33 m<sup>2</sup>

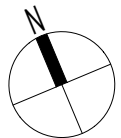
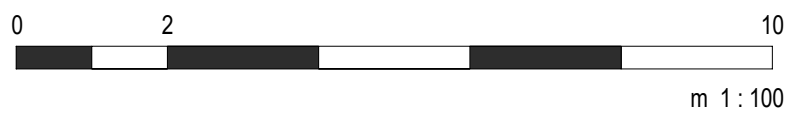
Balkon: 3,34 m<sup>2</sup>



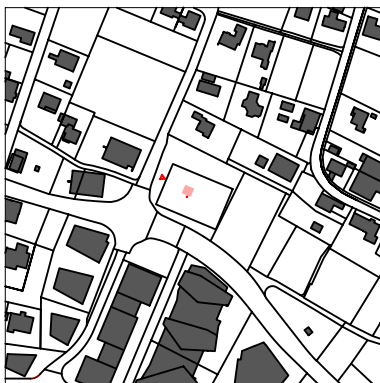




Top 4.09  
34,33 m²



## TOP 4.09



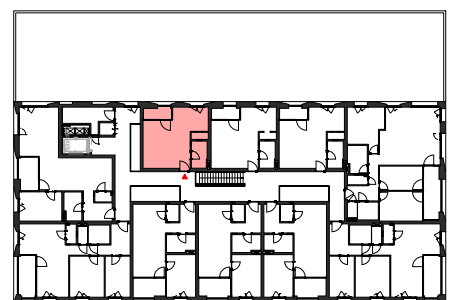
### 4. OG

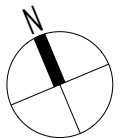
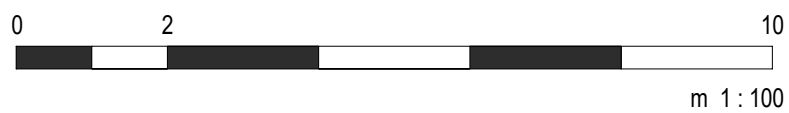
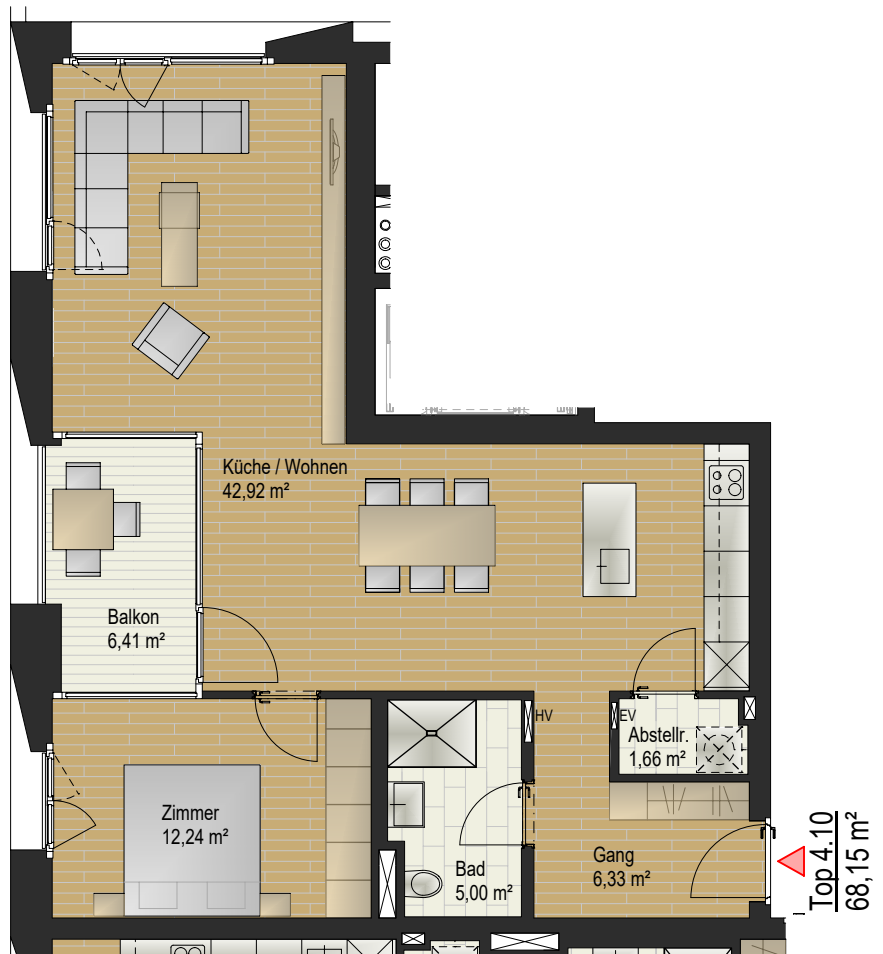
1 Zimmer

Ausrichtung: Nord-Ost

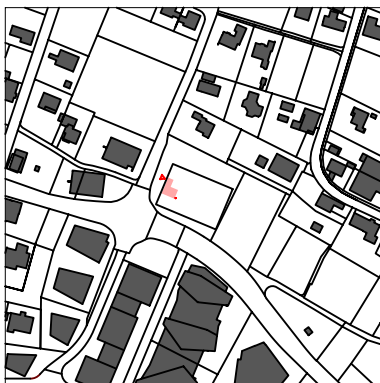
Wohnraum: 34,33 m²

Balkon: 3,34 m²





## TOP 4.10



### 4. OG

2 Zimmer

Ausrichtung: Nord-West

Wohnraum: 68,15 m<sup>2</sup>

Balkon: 6,41 m<sup>2</sup>

